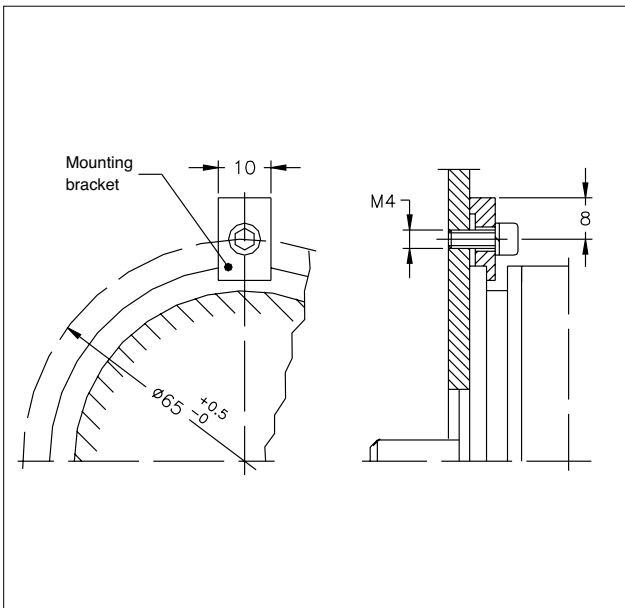




## MECHANICAL / ELECTRICAL DATA

Model		PR65
Theoretical electrical stroke (C.E.T.)	°	345 ± 4°
Useful electrical stroke (C.E.U.)	°	C.E.T. -2°
Resistance (C.E.T.)	kΩ	1 - 4.7 - 10
Independent linearity (within C.E.U.)	±%	A = ± 1% B = ± 0,5% C = ± 0,25% D = ± 0,1% E = ± 0,05%
Dissipation at 40°C (0W at 120°C)	W	1.25
Mechanical rotation (C.M.)	°	360° continuous
Weight	g	132

## MOUNTING DIAGRAM

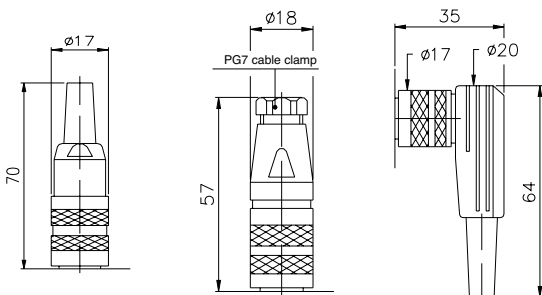


## OPTIONAL ACCESSORIES

Fixing kit for PR65:  
3 brackets, M4x10TCEI screws, grower  
(Included in the supply)

Code

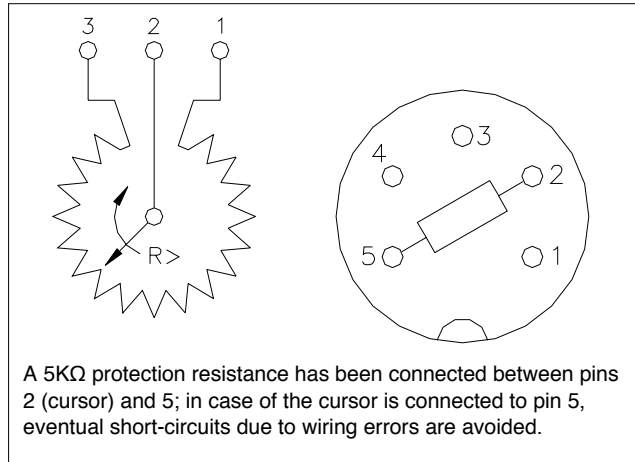
**PKIT008**



**CON011 - IP40 Prot.** (5 pole Female conn.)  
**CON012 - IP67 Prot.** (5 pole Female conn.)  
**CON013 - IP40 Prot.** (5 pole Female conn.)

Extraction length of the connector 10mm.

## ELECTRICAL CONNECTIONS



## ORDER CODE

Rotative transducer **PR65**

Linearity (std. B)

A = ± 1%
B = ± 0,5%
C = ± 0,25%
D = ± 0,1%
E = ± 0,05%

Resistance value (std. 103)	1kΩ	102
	4,7kΩ	472
	10kΩ	103

If requested, it is possible to supply models with non-standard mechanical and/or electrical features

Example: **PR65 - B - 0 - 103**

Rotative transducer model PR65, linearity ±0,5%, no voltage or current intermediate pick-offs, 10kΩ resistance.

GEFRAN spa reserves the right to make any kind of design or functional modification at any moment without prior notice

**GEFRAN**

GEFRAN spa  
via Sebina, 74  
25050 PROVAGLIO D'ISEO (BS) - ITALIA  
ph. 0309888.1 - fax. 0309839063  
Internet: <http://www.gefran.com>

DTS\_PR65\_11-2012\_ENG